



**Government of India  
Ministry of Earth Sciences  
India Meteorological Department**



**Press Release**

**Date: 19<sup>th</sup> August, 2025**

**Time of Issue: 1315 hours IST**

**Subject: i) Under the influence of Depression over south interior Odisha, extremely heavy rainfall likely over north Konkan (including Mumbai), south Gujarat state and Madya Maharashtra on 19<sup>th</sup> & 20<sup>th</sup>; Saurashtra & Kutch during 19<sup>th</sup>-21<sup>st</sup>; Vidarbha, north Telangana on 19<sup>th</sup> August.**  
**ii) Monsoon is likely to be in active phase over peninsular and adjoining central India during next 2-3 days.**  
**iii) Increase in rainfall activity over Northwest & adjoining East India from 22<sup>nd</sup> August onwards.**

**Realised weather during past 24 hours till 0830 hours IST of today, the 19<sup>th</sup> August, 2025:**

- ❖ **Heavy to very heavy rainfall with extremely heavy falls ( $\geq 21$  cm)** has been recorded at isolated places over Konkan, Madhya Maharashtra, Saurashtra and Coastal Karnataka.
- ❖ **Very heavy rainfall (12-20 cm)** has been recorded at isolated places over Madhya Pradesh, Vidarbha, Chhattisgarh, East Rajasthan, South Interior Karnataka, Odisha, Goa and Telangana.
- ❖ **Heavy rainfall (7-11 cm)** has been recorded at isolated places over Jammu, Himachal Pradesh, West Uttar Pradesh, Haryana, Marathwada, Gujarat Region, North Interior Karnataka, Coastal Andhra Pradesh, Tamil Nadu, Sub-Himalayan West Bengal, Bihar and Meghalaya.

**For more details of realised weather, kindly refer Annexure I.**

**i. Weather Systems, Forecast and Warnings (refer to Annexure II & III):**

- ❖ The Monsoon trough is active and runs south of its normal position. It is likely to shift gradually northwards from tomorrow, the 20<sup>th</sup> August, 2025 onwards.
- ❖ Yesterday's **well marked Low pressure area** over westcentral and adjoining northwest Bay of Bengal off north Andhra Pradesh and south Odisha coasts concentrated into a depression at 1730 hours IST of 18<sup>th</sup> August over northwest & adjoining westcentral Bay of Bengal and north Andhra Pradesh - south Odisha coasts. It moved west-northwestwards and lay centred at 0830 hrs IST of today, the 19<sup>th</sup> August over south interior Odisha. It is likely to continue to move west-northwestwards across south Odisha and south Chhattisgarh and weaken into a well marked low pressure area during next 12 hours.
- ❖ A **shear zone** runs roughly along Lat. 20°N over the Indian region at lower & middle tropospheric levels.
- ❖ An **upper air cyclonic circulation** lay over northeast Arabian Sea & adjoining Gujarat at middle tropospheric levels.
- ❖ An off shore trough at mean sea level runs from south Gujarat to north Kerala coasts.
- ❖ A **Western Disturbance** as a trough in lower tropospheric westerlies runs roughly along Long. 71°E to the north of Lat. 30°N.

Under the influence of these systems, the following weather is likely:

**West India:**

- ❖ **Extremely heavy rainfall** very likely at isolated places over **north Konkan (including Mumbai), south Gujarat state and Madya Maharashtra on 19<sup>th</sup> & 20<sup>th</sup>; Saurashtra & Kutch during 19<sup>th</sup>-21<sup>st</sup> August.**
- ❖ Isolated to scattered **heavy to very heavy rainfall** likely over Madhya Maharashtra, Konkan (including Mumbai) & Goa during 19<sup>th</sup>-21<sup>st</sup>; Gujarat State during 19<sup>th</sup>-22<sup>nd</sup> August.
- ❖ Isolated **heavy rainfall** likely over Konkan & Goa, Madhya Maharashtra, Gujarat State during 7 days, Marathwada on 19<sup>th</sup> August.
- ❖ Strong surface winds (speed reaching 40-50 kmph) very likely over the region till 22<sup>nd</sup> August.

- ❖ Light to moderate rainfall at most/many places very likely over the region during next 7 days.

#### South Peninsular India:

- ❖ **Extremely heavy rainfall** very likely at isolated places over north Telangana on 19<sup>th</sup> August.
- ❖ Isolated **heavy rainfall** likely over Coastal Karnataka, Telangana on 19<sup>th</sup> & 20<sup>th</sup>; Kerala & Mahe, Coastal Andhra Pradesh, Interior Karnataka on 19<sup>th</sup> August with isolated **very heavy rainfall over South Interior Karnataka and Coastal Karnataka on 19<sup>th</sup> August.**
- ❖ Strong surface winds (speed reaching 40-50 kmph) very likely over South Peninsular India till 19<sup>th</sup> August.
- ❖ Light to moderate rainfall at most/many places accompanied with thunderstorm & lightning likely over Rayalaseema, Tamil Nadu, Coastal Andhra Pradesh & Yanam and Telangana during next 5 days.

#### East & Central India:

- ❖ **Extremely heavy rainfall** very likely at isolated places over Vidarbha on 19<sup>th</sup> August.
- ❖ Isolated **heavy rainfall** likely over Madhya Pradesh, Chhattisgarh, Sub-Himalayan West Bengal & Sikkim during next 7 days; Vidarbha on 19<sup>th</sup>, 20<sup>th</sup>, 24<sup>th</sup> & 25<sup>th</sup>; Odisha on 19<sup>th</sup>, during 21<sup>st</sup>-23<sup>rd</sup>; Gangetic West Bengal, Jharkhand during 21<sup>st</sup>-25<sup>th</sup>; Bihar during 20<sup>th</sup>-25<sup>th</sup> August **with isolated very heavy rainfall over Chhattisgarh, East Madhya Pradesh on 19<sup>th</sup>; Jharkhand on 22<sup>nd</sup>; Bihar on 22<sup>nd</sup> & 23<sup>rd</sup> and Madhya Pradesh during 23<sup>rd</sup>-25<sup>th</sup> and Chhattisgarh during 24<sup>th</sup>-25<sup>th</sup> August.**
- ❖ Light to moderate rainfall at most/many places accompanied with thunderstorm & lightning likely over the region during next 5 days.

#### Northwest India:

- ❖ Isolated **heavy rainfall** likely over Jammu-Kashmir during 22<sup>nd</sup>-24<sup>th</sup>; Himachal Pradesh, Uttarakhand, East Rajasthan during next 7 days; Punjab, Haryana on 19<sup>th</sup>, during 22<sup>nd</sup>-25<sup>th</sup>; Uttar Pradesh during 22<sup>nd</sup>-25<sup>th</sup> August **with very heavy rainfall over Uttarakhand, West Uttar Pradesh during 23<sup>rd</sup>-25<sup>th</sup>; East Uttar Pradesh during 22<sup>nd</sup>-24<sup>th</sup> August.**
- ❖ Light/moderate rainfall at most/many places accompanied with thunderstorm & lightning likely over Jammu-Kashmir-Ladakh-Gilgit-Baltistan-Muzaffarabad, Uttarakhand & Rajasthan during next 7 days.

#### Northeast India:

- ❖ Isolated **heavy rainfall** likely to continue over Assam & Meghalaya, Nagaland, Manipur, Mizoram & Tripura, Arunachal Pradesh during 7 days with **very heavy rainfall over Arunachal Pradesh on 21<sup>st</sup>-23<sup>rd</sup>; Tripura, Mizoram during 21<sup>st</sup>-25<sup>th</sup> and Assam & Meghalaya during 21<sup>st</sup>-24<sup>th</sup> August.**
- ❖ Light/moderate rainfall at many places accompanied with thunderstorm & lightning likely during next 3 days.

#### Fishermen warning:

Fishermen are advised not to venture into the following from 19<sup>th</sup> August to 24<sup>th</sup> August 2025 to the following Areas:

##### Arabian Sea:

Over central Arabian Sea & adjoining, some parts of south Arabian Sea; many parts of northeast Arabian Sea during 19<sup>th</sup> to 24<sup>th</sup> August; over Comorin area during 19<sup>th</sup> August; Lakshadweep area, Karnataka coast during 19<sup>th</sup> & 21<sup>st</sup> August; over many parts of northwest Arabian Sea on 23<sup>rd</sup> August; along and off Gujarat, Konkan, Goa coasts during 19<sup>th</sup> to 24<sup>th</sup> August; along & off Kerala coast during 19<sup>th</sup> August.

##### Bay of Bengal:

Along and off Sri Lanka, Andhra Pradesh-Odisha coasts for 19<sup>th</sup> to 21<sup>st</sup> August; over most parts Bay of Bengal during 19<sup>th</sup> August; most parts of central, northwest Bay of Bengal and many parts of south Bay of Bengal for 20<sup>th</sup> August; most parts of south & central Bay of Bengal and adjoining northwest Bay of Bengal for 21<sup>st</sup> August; most parts of north Bay of Bengal and many parts of central Bay of Bengal during 22<sup>nd</sup> to 24<sup>th</sup> August; along and off Tamil Nadu coast during 19<sup>th</sup> August; along and off West Bengal coast on 19<sup>th</sup>, 20<sup>th</sup>, 22<sup>nd</sup>, 23<sup>rd</sup> August.

Over Gulf of Mannar during 19<sup>th</sup> to 22<sup>nd</sup> and Andaman Sea for 19<sup>th</sup> August.

#### ii. Weather conditions and forecast over Delhi/NCR during 19<sup>th</sup> to 22<sup>nd</sup> August, 2025 (Annexure IV)

For more details, kindly refer National Weather Bulletin:

[https://mausam.imd.gov.in/responsive/all\\_india\\_forecast\\_bulletin.php](https://mausam.imd.gov.in/responsive/all_india_forecast_bulletin.php)

For District wise warnings refer: <https://mausam.imd.gov.in/responsive/districtWiseWarningGIS.php>

For Fishermen warning refer <https://rsmcnewdelhi.imd.gov.in/fishermen-warning.php>

**Rainfall recorded (in cm) during past 24 hours till 0830 hours IST of today, the 19<sup>th</sup> August:**

**Saurashtra & Kutch:** Sutrapada (dist Gir Somnath) 29; Diu (dist Diu) 15; Kodinar (dist Gir Somnath) 13; Gir Gadhada (dist Gir Somnath) 12; Veraval (dist Gir Somnath), Mangrol(j) (dist Junagadh) 11 Each; Talala (dist Gir Somnath), Malia (dist Junagadh), Una (dist Gir Somnath) 7 Each;

**Madhya Maharashtra:** Gaganbawada (dist Kolhapur) 26; Radhanagari (dist Kolhapur) 22; Mahabaleshwar (dist Satara) 17; Shahuwadi (dist Kolhapur) 16; Lonavala ARG (dist Pune) 15; Kolhapur/Karvir IMD (dist Kolhapur), Kagal (dist Kolhapur) 7 Each;

**Konkan & Goa:** Matheran (dist Raigad), Mhasla (dist Raigad) 25 Each; Santacruz (dist Mumbai Suburban), Tala (dist Raigad), Savarde-arg (dist Ratnagiri) 24 Each; Dapoli ARG (dist Ratnagiri), Vaibhavwadi (dist Sindhudurg) 23 Each; Mangaon (dist Raigad), Roha (dist Raigad), Vasai (dist Palghar) 22 Each; Tbia IMD Part Time (dist Thane), Panvel ARG (dist Raigad), Shriwardhan (dist Raigad), Lanja (dist Ratnagiri) 21 Each; Pen (dist Raigad) 19; Sudhagad Pali (dist Raigad), Rajapur (dist Ratnagiri) 18 Each; Thane (dist Thane), Mandangad (dist Ratnagiri), Karjat ARG (dist Raigad) 17 Each; Wada (dist Palghar), Mahad (dist Raigad), Poladpur (dist Raigad) 16 Each; Khed (dist Ratnagiri), Chiplun (dist Ratnagiri), Bhiwandi (dist Thane) 15 Each; Ratnagiri (dist Ratnagiri), Sanguem (dist South Goa), Uran (dist Raigad) 14 Each; Ambernath (dist Thane), Devgad (dist Sindhudurg), Khalapur (dist Raigad), Wakwali ARG (dist Ratnagiri), Sangameshwar Devrukh (dist Ratnagiri) 13 Each; Harnai IMD (dist Ratnagiri), Guhagarh (dist Ratnagiri), Palghar ARG (dist Palghar), Rameshwar ARG (dist Sindhudurg), Kankavli (dist Sindhudurg), Ulhasnagar (dist Thane), Quepem (dist South Goa) 12 Each; Murbad (dist Thane), Colaba (dist Mumbai City), Vikramgad (dist Palghar) 11 Each; Alibag - IMD Part Time (dist Raigad), Kudal (dist Sindhudurg), Mulde ARG (dist Sindhudurg), Canacona (dist South Goa), Margao (dist South Goa) 10 Each; Murud (dist Raigad), Sawantwadi (dist Sindhudurg) 9 Each; Awalegaon - ARG (dist Sindhudurg), Kalyan (dist Thane) 8 Each; Ponda (dist North Goa), Pernem (dist North Goa) 7 Each;

**Coastal Karnataka:** Castle Rock (dist Uttara Kannada) 22; Manki (dist Uttara Kannada) 19; Jagalbet (dist Uttara Kannada) 15; Siddapura (dist Udupi), Kota (dist Udupi) 9 Each; Kadra (dist Uttara Kannada), Kundapur (dist Udupi) 8 Each; Udupi (dist Udupi), Joida (dist Uttara Kannada), Gersoppa (dist Uttara Kannada), Haliyal (dist Uttara Kannada) 7 Each;

**West Madhya Pradesh:** Bhimpur (dist Betul) 17; Punasa Dam (dist Khandwa) 8; Bhainsdehi (dist Betul), Piploda (dist Ratlam) 7 Each;

**Telangana:** Eturnagaram (dist Mulugu) 17; Venkatapuram (dist Mulugu) 14; Wankdi (dist Kumaram Bheem) 12; Tadwai Mlg (dist Mulugu) 11; Mancherial (dist Mancherial) 10; Adilabad (dist Adilabad) 9; Bhiknur (dist Kamareddy), Kerameri (dist Kumaram Bheem) 8 Each; Perur (dist Mulugu) 7;

**South Interior Karnataka:** Kottigehara (dist Chikkamagaluru), Agumbe AWS (dist Shivamogga) 16 Each; Jayapura (dist Chikkamagaluru) 9; Koppa (dist Chikkamagaluru) 8; Sringeri HMS (dist Chikkamagaluru) 7;

**Vidarbha:** Armori (dist Gadchiroli) 16; Bramhapuri (dist Chandrapur), Desaiganj (dist Gadchiroli) 15 Each; Bhamragad (dist Gadchiroli), Gadchiroli (dist Gadchiroli) 13 Each; Lakhandur (dist Bhandara), Bhiwapur (dist Nagpur) 11 Each; Saoli (dist Chandrapur), Nagbhir (dist Chandrapur) 10 Each; Nagpur Aerodrome (dist Nagpur) 9; Arjuni Morgaon (dist Gondia), Chamorshi (dist Gadchiroli), Saoner (dist Nagpur), Kalmeshwar (dist Nagpur), Mul (dist Chandrapur) 8 Each; Dhanora (dist Gadchiroli), Kurkheda (dist Gadchiroli), Pauni (dist Bhandara), Mulchera (dist Gadchiroli), Chimur (dist Chandrapur), Etapalli (dist Gadchiroli), Pombhurna (dist Chandrapur) 7 Each;

**Odisha:** Kotpad (dist Koraput) 15; Kashinagar (dist Gajapati) 10; Raighar (dist Nawarangpur), Jhorigam (dist Nawarangpur), Paralakhemundi (dist Gajapati), Lamataput (dist Koraput), Papadahandi (dist Nawarangpur), Boden (dist Nawapara) 8 Each; Koraput (dist Koraput) 7;

**Chhattisgarh:** Narayanpur (dist Narayanpur) 14; Aundhi (dist Mohala Manpur Chowki) 10; Darbha (dist Bastar), Bastanar (dist Bastar), Bhairamgarh (dist Bijapur) 8 Each; Jagdalpur (dist Bastar), Katekalyan (dist Dantewada), Nangur (dist Bastar) 7 Each;

**East Madhya Pradesh:** Sausar (dist Chindwara) 13; Kurai (dist Seoni) 11; Pandhurna (dist Chindwara) 10;

**Haryana:** Sahlawas (dist Jhajjar) 11; Madluda REV (dist Panipat) 7;

**Assam & Meghalaya:** Shella (dist East Khasi Hills) 11; Silchar (dist Cachar) 9; A P Ghat (dist Cachar) 8; Cherrapunji (dist East Khasi Hills) 7;

**East Rajasthan:** Bhungra SR (dist Banswara) 11; Nainwa (dist Bundi) 7;

**Gujarat Region:** Umernagar (dist Valsad) 11; Deesa (dist Banaskantha) 8; Silvassa (dist Dadara & Nagar Haveli) 7;

**West Uttar Pradesh:** Sardhana (dist Meerut) 10; Mavi Fmo (dist Shamli) 9;

**North Interior Karnataka:** Londa (dist Belagavi) 9; Nippani (dist Belagavi) 8;

**Tamil Nadu, Puducherry & Karaikal:** Avalanche (dist Nilgiris) 9; Naduvattam (dist Nilgiris), Taluk Office Pandalur (dist Nilgiris) 8 Each;

**Sub Himalayan West Bengal & Sikkim:** Beech Tea Garden (dist Alipurduar) 8; Kurti T.e. (dist Jalpaiguri) 7;

**Coastal Andhra Pradesh & Yanam:** Pathapatnam (dist Srikakulam) 8;

**Jammu:** Raj Pura ARG (dist Poonch) 8;

**Marathwada:** Georai (dist Beed), Kandhar (dist Nanded) 7 Each;

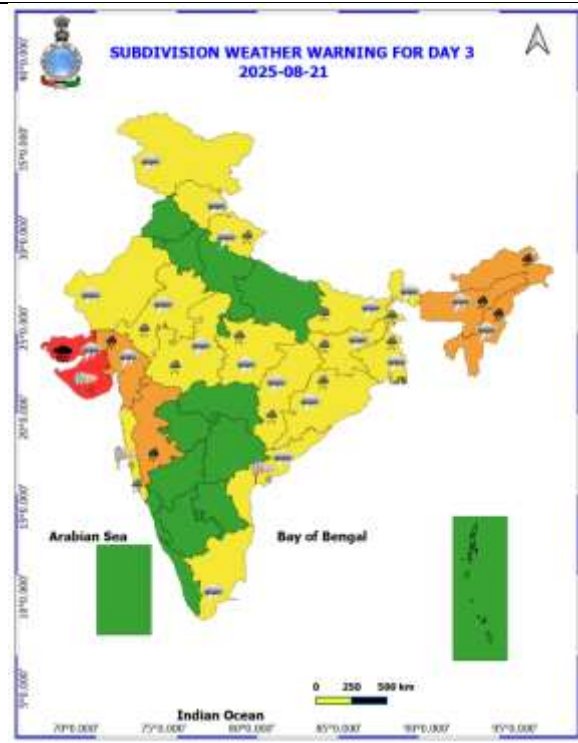
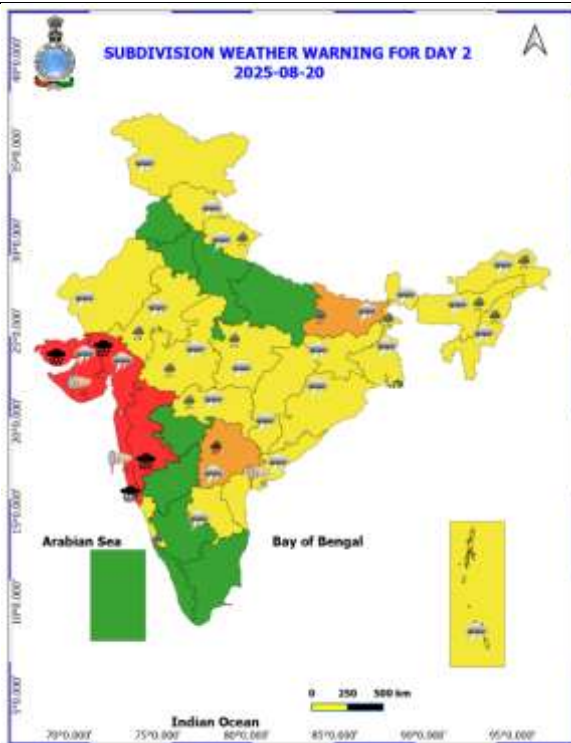
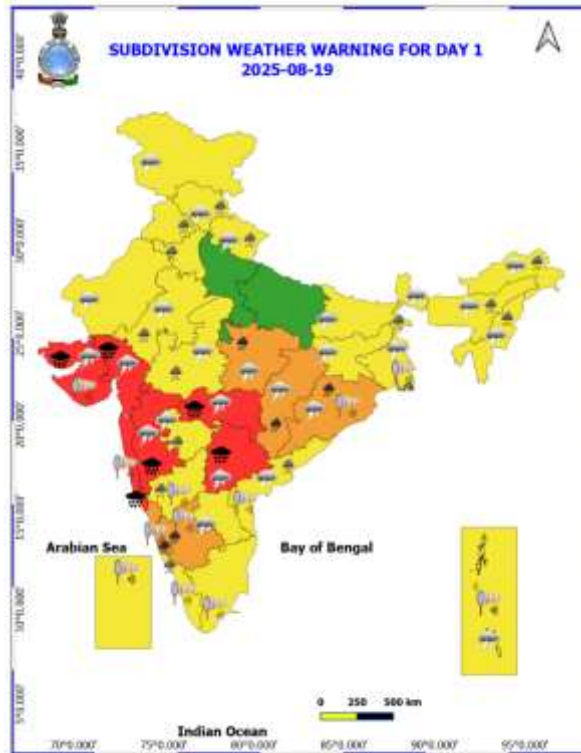
**Bihar:** Madanpur (dist Aurangabad) 7;

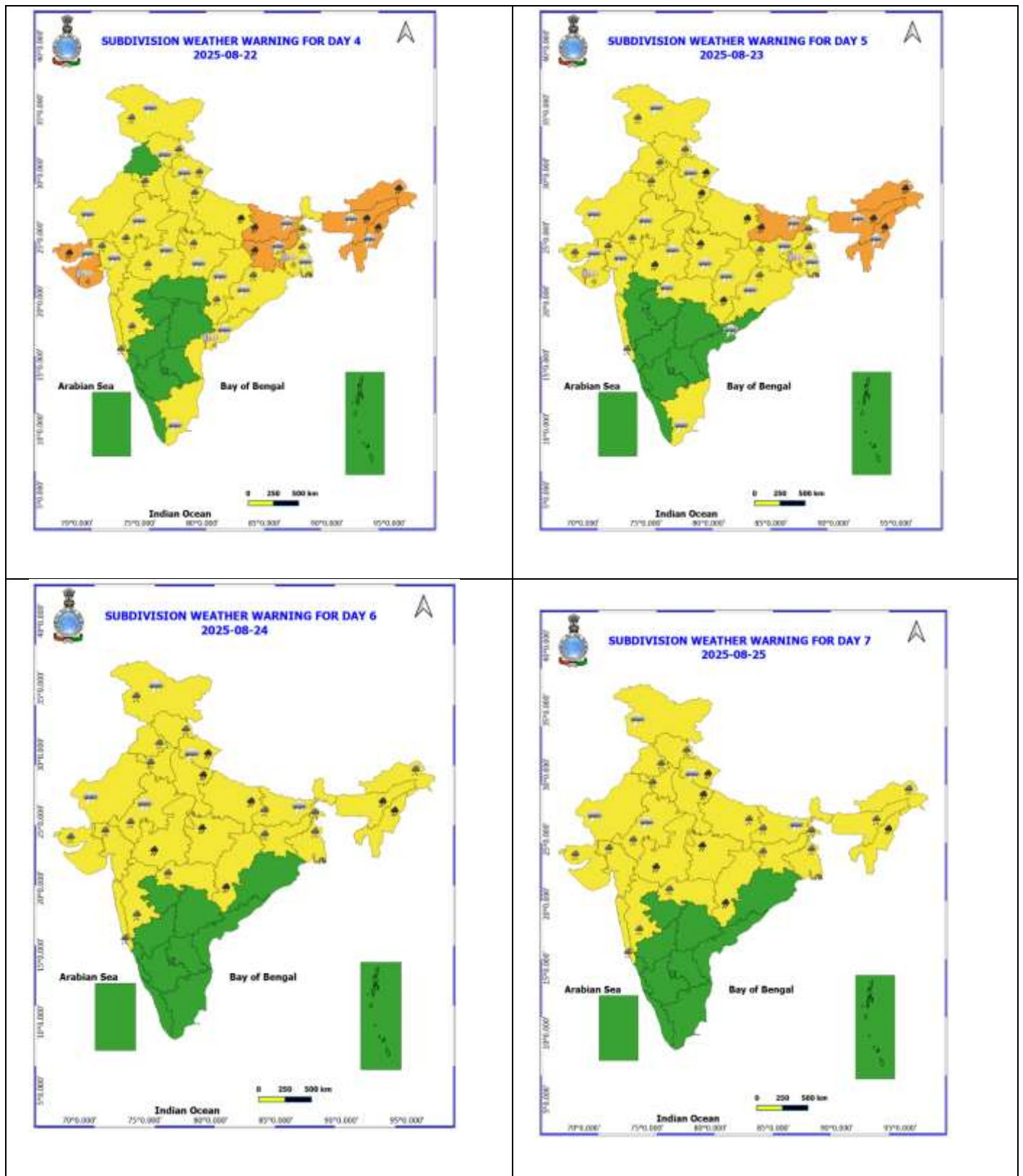
**Himachal Pradesh:** Shimla AP (dist Shimla) 7.



Table-1								
7 Days Rainfall Forecast								
S.No.	Subdivision	19- Aug	20- Aug	21- Aug	22- Aug	23- Aug	24- Aug	25- Aug
		Day 1	Day 2	Day 3	Day 4	Day 5	Day 6	Day 7
1	ANDAMAN & NICOBAR ISLANDS	WS	WS	WS	FWS	FWS	FWS	WS
2	ARUNACHAL PRADESH	FWS	FWS	FWS	WS	WS	FWS	FWS
3	ASSAM & MEHGHALAYA	FWS	WS	WS	WS	WS	FWS	FWS
4	NAGALAND, MANIPUR, MIZORAM AND TRIPURA	FWS	FWS	WS	WS	WS	WS	WS
5	SUB HIMALAYAN WEST BENGAL & SIKKIM	FWS	FWS	FWS	FWS	FWS	FWS	FWS
6	GANGETIC WEST BENGAL	FWS	FWS	WS	WS	WS	WS	WS
7	ODISHA	WS	FWS	FWS	FWS	FWS	FWS	FWS
8	JHARKHAND	FWS	WS	WS	WS	WS	WS	WS
9	BIHAR	SCT	FWS	FWS	WS	WS	WS	FWS
10	EAST UTTAR PRADESH	ISOL	ISOL	FWS	WS	WS	WS	FWS
11	WEST UTTAR PRADESH	ISOL	ISOL	SCT	FWS	WS	WS	WS
12	UTTARAKHAND	FWS	WS	FWS	WS	WS	WS	WS
13	HARYANA, CHANDIGARH & DELHI	SCT	SCT	SCT	FWS	WS	FWS	FWS
14	PUNJAB	SCT	SCT	ISOL	SCT	WS	FWS	FWS
15	HIMACHAL PRADESH	SCT	SCT	SCT	FWS	WS	WS	WS
16	JAMMU AND KASHMIR AND LADAKH	FWS	ISOL	ISOL	SCT	FWS	WS	FWS
17	WEST RAJASTHAN	ISOL	ISOL	SCT	SCT	ISOL	SCT	SCT
18	EAST RAJASTHAN	SCT	SCT	FWS	FWS	FWS	FWS	FWS
19	WEST MADHYA PRADESH	FWS	WS	FWS	FWS	FWS	WS	WS
20	EAST MADHYA PRADESH	FWS	WS	FWS	FWS	WS	WS	WS
21	GUJRAT REGION	WS	WS	WS	WS	WS	WS	WS
22	SAURASHTRA & KUTCH	WS	WS	WS	WS	WS	WS	FWS
23	KONKAN & GOA	WS	WS	WS	WS	WS	WS	WS
24	MADHYA MAHARASHTRA	WS	FWS	SCT	ISOL	ISOL	ISOL	ISOL
25	MARATHWADA	WS	FWS	SCT	ISOL	ISOL	ISOL	ISOL
26	VIDARBHA	WS	WS	FWS	SCT	SCT	FWS	FWS
27	CHHATTISGARH	WS	FWS	SCT	FWS	FWS	WS	WS
28	COASTAL ANDHRA PRADESH	FWS	FWS	SCT	ISOL	ISOL	ISOL	ISOL
29	TELANGANA	FWS	FWS	SCT	SCT	SCT	SCT	SCT
30	RAYALASEEMA	SCT	SCT	ISOL	ISOL	ISOL	ISOL	ISOL
31	TAMILNADU & PUDUCHERRY	ISOL	ISOL	ISOL	SCT	SCT	ISOL	ISOL
32	COSTAL KARNATAKA	WS	WS	WS	FWS	FWS	FWS	FWS
33	NORTH INTERIOR KARNATAKA	WS	FWS	SCT	SCT	SCT	ISOL	ISOL
34	SOUTH INTERIOR KARNATAKA	WS	FWS	SCT	SCT	SCT	ISOL	ISOL
35	KERALA AND MAHE	FWS	FWS	SCT	SCT	SCT	SCT	SCT
36	LAKSHADWEEP	SCT	SCT	SCT	SCT	SCT	SCT	SCT

- As the lead period increases forecast accuracy decrease.





- Action may be taken based on ORANGE AND REDCOLOUR warnings.
- Vulnerable regions likely urban and hilly areas action may be initiated for heavy rainfall warning.
- As the lead period increases forecast accuracy decreases.

Detailed districtwise Multi Hazard weather warning for next five days available at <https://mausam.imd.gov.in/responsive/districtWiseWarningGIS.php>



**Weather forecast over Delhi/NCR during 19<sup>th</sup> August to 22<sup>th</sup> August 2025****Past Weather:**

Minimum temperatures increased appreciably by 1–2 °C, while maximum temperatures showed no significant change during the past 24 hours over Delhi. Minimum temperatures ranged between 25–28 °C and maximum temperatures between 33–35 °C, both remaining near normal for the region. Northeasterly winds prevailed with speeds up to 19 km/h, and Ridge station recorded the highest rainfall of 1.8 mm in past 24 hours over Delhi. Partly cloudy sky conditions and northeasterly winds of 10-15 kmph prevailed over the region in the forenoon today.

**Weather Forecast:**

**19.08.2025:** Partly cloudy sky. Possibility of a spell of very light rain/drizzle towards evening/night. The maximum temperatures over Delhi are likely to be in the range of 34 to 36°C. The maximum temperature will be near normal. The predominant surface wind will likely be from the southeast direction with a wind speed of upto 10-15 kmph during afternoon and 10-15 kmph from the east direction evening and night.

**20.08.2025:** Partly cloudy sky. Possibility of very light to light rain/ thundershowers. The maximum and minimum temperatures over Delhi are likely to be in the range of 33 to 35°C and 23 to 25 °C respectively. The minimum temperature will be below normal up to 1 to 2°C and the maximum temperature will be near normal. The predominant surface wind will likely to be from the east direction with a wind speed of upto 10-15 kmph during morning and 10-15 kmph from the east direction during afternoon hours. The wind speed will remain same upto 10-15 kmph from the east direction during evening and night.

**21.08.2025:** Generally cloudy sky. Possibility of very light to light rain/ thundershowers. The maximum and minimum temperatures over Delhi are likely to be in the range of 33 to 35°C and 23 to 25°C respectively. The minimum temperature will be below normal up to 1 to 2°C and the maximum temperature will be near normal. The predominant surface wind will likely to be from the east direction with a wind speed of upto 10-15 kmph during morning and 10-15 kmph from southeast direction in the afternoon hours. It will remain same upto 10-15 kmph from the southeast direction during evening and night.

**22.08.2025:** Generally cloudy sky. Possibility of light to moderate rain/thundershowers. The maximum and minimum temperatures over Delhi are likely to be in the range of 31 to 33°C and 22 to 24°C respectively. The minimum temperature will be below normal up to 2 to 3°C and the maximum temperature will be below normal up to 1 to 2°C. The predominant surface wind will likely to be from the southeast direction with a wind speed of 10-15 kmph during morning and afternoon hours. It will gradually decrease upto 05-10 kmph from the southeast direction during evening and night.

### Impact & Action Suggested due to

- ❖ **Extremely heavy rainfall** very likely at isolated places over Konkan & Goa, Vidarbha, north Telangana on 19<sup>th</sup>; north Konkan on 20<sup>th</sup>; Gujarat State, Ghat areas of Madhya Maharashtra on 19<sup>th</sup> & 20<sup>th</sup> August.
- ❖ Isolated to scattered **heavy to very heavy rainfall** likely over Madhya Maharashtra, Konkan (including Mumbai) & Goa during 19<sup>th</sup>-21<sup>st</sup>; Gujarat State during 19<sup>th</sup>-22<sup>nd</sup> August; South Interior Karnataka and Coastal Karnataka, Chhattisgarh, East Madhya Pradesh on 19<sup>th</sup>; Jharkhand on 22<sup>nd</sup>; Bihar on 22<sup>nd</sup> & 23<sup>rd</sup> and Madhya Pradesh, Chhattisgarh, Uttarakhand, West Uttar Pradesh during 23<sup>rd</sup>-25<sup>th</sup>; East Uttar Pradesh during 22<sup>nd</sup>-24<sup>th</sup>; Arunachal Pradesh on 21<sup>st</sup>-23<sup>rd</sup>; Tripura, Mizoram during 21<sup>st</sup>-25<sup>th</sup> and Assam & Meghalaya during 21<sup>st</sup>-24<sup>th</sup> August.

### Impact Expected

- Localized Flooding of roads, water logging in low lying areas and closure of underpasses mainly in urban areas of the above region.
- Occasional reduction in visibility due to heavy rainfall.
- Disruption of traffic in major cities due to water logging in roads leading to increased travel time.
- Minor damage to kutcha roads.
- Possibilities of damage to vulnerable structure.
- Localized Landslides/Mudslides/landslips/mudsinks/landsinks/mudsinks.
- Damage to horticulture and standing crops in some areas due to inundation.
- It may lead to riverine flooding in some river catchments (for riverine flooding please visit Web page of CWC)

### Action Suggested

- Check for traffic congestion on your route before leaving for your destination.
- Follow any traffic advisories that are issued in this regard.
- Avoid going to areas that face the water logging problems often.
- Avoid staying in vulnerable structure.

### Agromet advisories for likely impact of Heavy / Heavy to Very Heavy Rainfall

- In **Maharashtra**, make arrangements to drain out excess water from rice fields maintaining 2.5 to 5 cm water level in **Konkan** and **ghat areas** of **Madhya Maharashtra**. In **Marathwada**, keep the harvested green gram produce in safer places. To prevent waterlogging, make provision for draining out excess water from fields of finger millet, turmeric, groundnut, vegetables and fruit orchards in **Konkan**; maize, groundnut, soybean, vegetables and fruit orchards in **ghat areas** of **Madhya Maharashtra**; groundnut, black gram, green gram, soybean, cotton, pigeon pea, pearl millet, turmeric, sugarcane, vegetables and fruit orchards in **Marathwada**; soybean and cotton in **West Vidarbha** and rice, soybean, cotton, pigeon pea, vegetables and fruit orchards in **East Vidarbha**.
- In **Gujarat**, make arrangements to drain out excess water from fields of rice, sugarcane, vegetables and tuber crops in **South Gujarat Heavy Rainfall Zone**; rice, cotton, sugarcane and pigeon pea in **South Gujarat Zone**; groundnut, cotton, soybean, black gram, green gram, sesame and pigeon pea in **South Saurashtra Zone**; groundnut, cotton and sesame in **North Saurashtra Zone** and rice, cotton, green gram, black gram, pigeon pea, pearl millet and vegetables in **Bhal and Coastal Zone**.
- In **Madhya Pradesh**, provide adequate drainage in fields of maize, soybean, cotton and vegetables in **Satpura Plateau Zone**; soybean, maize and vegetables in **Malwa Plateau Zone**; rice, soybean, maize, sugarcane and vegetables in **Central Narmada Valley Zone**; soybean, pigeon pea, cotton and vegetables in **Nimar Valley Zone** and maize, soybean, black gram, cotton, and pigeon pea in **Vindhyan Plateau Zone**.
- In **Chhattisgarh**, drain out excess water from fields of *khari* maize, rice, minor millets, pulses and vegetables in **Bastar Plateau Zone**.
- In **Kerala**, provide adequate drainage in rice, coconut, banana and ginger fields. Provide support to banana plantations. Make the vegetable pandals stronger.
- In **Karnataka**, provide adequate drainage facilities in rice and ginger fields, and plantations of arecanut, coconut and banana in **Coastal Zone**; fields of rice, maize, cotton, ginger and plantations of arecanut in **Hill Zone** and fields of rice, maize and plantations of arecanut and coconut in **Southern Transition Zone**.



- In **Telangana**, drain out excess water from fields of rice, cotton, maize, soybean, pigeon pea, turmeric and vegetables in **Northern Telangana Zone** and rice, cotton, soybean, vegetables and vegetable nurseries in **Southern Telangana Zone**.
- In **Andhra Pradesh**, make arrangements to drain out excess water from fields of maize, cotton, sugarcane, rice, mesta, red gram, green gram, black gram and groundnut in **North Coastal Zone** and rice, maize and vegetable fields in **High Altitude Tribal Zone**.
- In **Odisha**, make arrangements to drain out excess water from the fields of rice, maize, green gram, black gram, ginger, turmeric, vegetables and orchards in **Eastern Ghat High Land Zone** and **South Eastern Ghats**.
- In **Himachal Pradesh**, maintain proper drainage channels in ginger, turmeric and maize fields in **Mid Hills Sub Humid Zone** and rice, maize and vegetable fields in **Sub Montane and Low Hills Sub Tropical Zone**. In **High Hills Sub Temperate Wet Zone**, harvest ripened tomatoes and ensure proper drainage in maize, kidney bean, vegetables and orchards.
- In **Uttarakhand**, maintain proper drainage channels in fields of soybean, maize, pulses, finger millet, ginger, vegetable fields and fruit orchards in **Hill Zone**; barnyard millet, finger millet and already sown green gram in **Sub Humid Sub Tropic Zone**. Ensure proper drainage in rice, maize, soybean, green gram, and vegetables in Nainital district.
- In **Punjab**, In **Undulating Plain Zone**, maintain proper drainage in chilli fields and remove stagnant rainwater immediately after rainfall. In **Sub-Montane Undulating Zone**, ensure proper drainage in sugarcane maize, soybean and green gram.
- In **Haryana** - In **Eastern Zone**, postpone irrigation in cotton and pearl millet crop fields and make drainage system to drain out excess water.

#### **Livestock / Fishery**

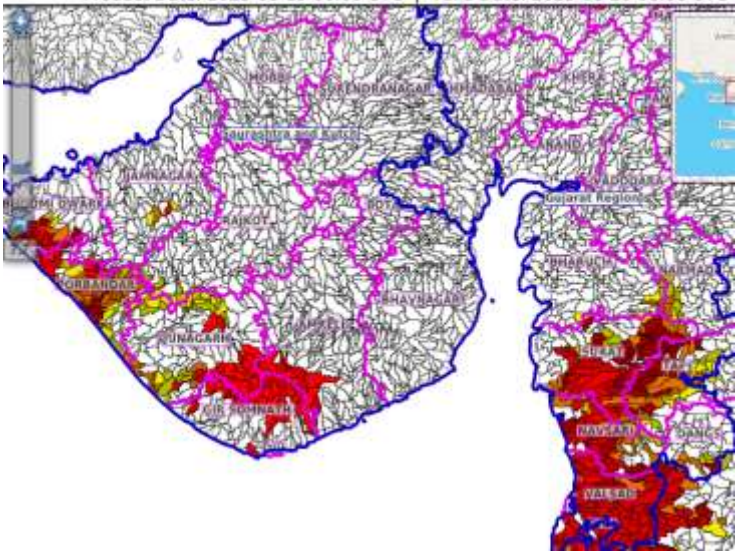
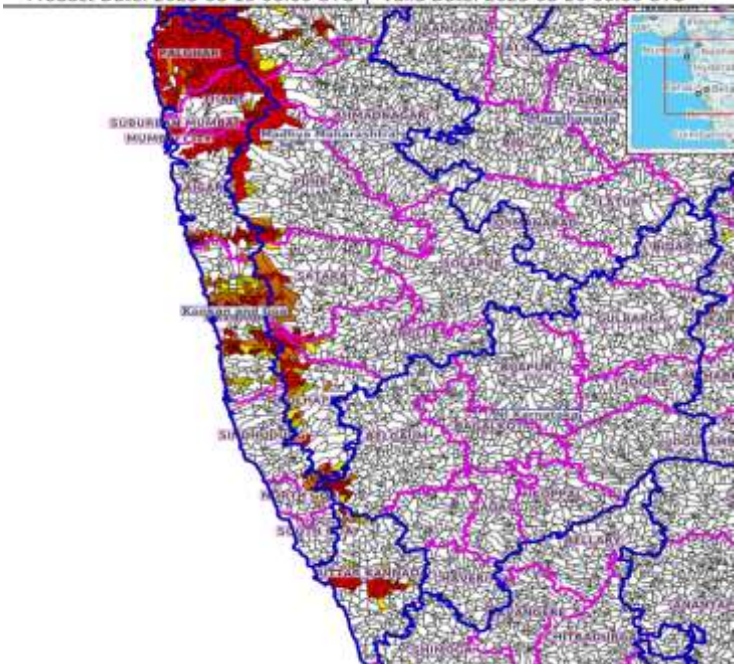
- Keep the animals inside the shed during heavy rainfall and provide them balanced feed.
- Store feed and fodder in a safe place to prevent spoilage.
- Construct an outlet with proper netting around the ponds to drain out excess water, thereby preventing fish from escaping in case of overflow.

#### **Agromet advisories for likely impact of Thunderstorm / Gusty Winds / Squally Winds**

##### **(Based on the IBF and advisories issued by different AMFUs)**

- Provide mechanical support to horticultural crops and staking or support to vegetables and young fruit plants / fruit-bearing plants to avoid lodging due to strong winds.

Flash flood guidance:

<p>24 hours Outlook for the Flash Flood Risk (FFR) till 1130 IST of 20-08-2025 :</p> <p>Low to Moderate flash flood risk likely over few watersheds &amp; neighbourhoods of following Met Sub-divisions during next 24 hours.</p> <p>Gujarat Region - Dadar &amp; Nagar Haveli, Daman, Bharuch, Dangs, Narmada, Surat, Tapi and Valsad districts. Saurashtra &amp; Kutch - Amreli, Devbhoomi Dwarka, Diu, Gir Somnath, Jamnagar, Junagarh, Porbandar and Rajkot districts.</p> <p>Surface runoff/ Inundation may occur at some fully saturated soils &amp; low-lying areas over Area of Concern (AoC) as shown in map due to expected rainfall occurrence in next 24 hours.</p>	<p>Product: NCUM FFR   Timescale: 24-hr   Region: "REGIONAL" Product Date: 2025-08-19 06:00 UTC   Valid Date: 2025-08-20 06:00 UTC</p>  <p>This map displays the flash flood risk (FFR) for the Gujarat region. The map shows the state's coastline and major river networks. Areas of high risk are highlighted in red, while areas of moderate risk are highlighted in yellow. The risk is concentrated in the western part of the state, particularly in the districts of Dadar &amp; Nagar Haveli, Daman, Bharuch, Dangs, Narmada, Surat, Tapi, and Valsad. The map also shows the locations of major cities and towns in the region.</p>
<p>24 hours Outlook for the Flash Flood Risk (FFR) till 1130 IST of 20-08-2025 :</p> <p>Low to Moderate flash flood risk likely over few watersheds &amp; neighbourhoods of following Met Sub-divisions during next 24 hours.</p> <p>Coastal Karnataka - Uttar Kannada district. Konkan &amp; Goa - North Goa, South Goa, Mumbai City, Palghar, Raigarh, Ratnagiri, Sindhudurg, Suburban Mumbai and Thane districts.</p> <p>Surface runoff/ Inundation may occur at some fully saturated soils &amp; low-lying areas over Area of Concern (AoC) as shown in map due to expected rainfall occurrence in next 24 hours.</p>	<p>Product: NCUM FFR   Timescale: 24-hr   Region: "REGIONAL" Product Date: 2025-08-19 06:00 UTC   Valid Date: 2025-08-20 06:00 UTC</p>  <p>This map displays the flash flood risk (FFR) for the Coastal Karnataka and Konkan &amp; Goa regions. The map shows the coastline and major river networks. Areas of high risk are highlighted in red, while areas of moderate risk are highlighted in yellow. The risk is concentrated in the western part of the state, particularly in the districts of Uttar Kannada, North Goa, South Goa, Mumbai City, Palghar, Raigarh, Ratnagiri, Sindhudurg, Suburban Mumbai, and Thane. The map also shows the locations of major cities and towns in the region.</p>

### **Legends & abbreviations:**

- ❖ **Heavy Rain:**64.5-115.5mm; **Very Heavy Rain:**115.6-204.4mm; **Extremely Heavy Rain:** >204.4mm.
- ❖ **Obsy:** Observatory; Automatic Weather Station; **ARG:** Automatic Rain Gauge; **dist:** District; **NH:** National Highway; **KVK:** Krishi Vigyan Kendra; **DVC:** Damodar Valley Corporation; **PTO:** Part Time Office, **Aero:** Aerodrome, **IAF:** Indian Air Force.
- ❖ **Region wise classification of meteorological Sub-Divisions:**
  - **Northwest India:** Western Himalayan Region (Jammu-Kashmir-Ladakh-Gilgit-Baltistan-Muzaffarabad, Himachal Pradesh and Uttarakhand); Punjab, Haryana-Chandigarh-Delhi; West Uttar Pradesh, East Uttar Pradesh, West Rajasthan and East Rajasthan.
  - **Central India:** West Madhya Pradesh, East Madhya Pradesh, Vidarbha and Chhattisgarh.
  - **East India:** Bihar, Jharkhand, Sub-Himalayan West Bengal & Sikkim; Gangetic West Bengal, Odisha and Andaman & Nicobar Islands.
  - **Northeast India:** Arunachal Pradesh, Assam & Meghalaya and Nagaland, Manipur, Mizoram & Tripura.
  - **West India:** Gujarat Region, Saurashtra & Kutch, Konkan & Goa, Madhya Maharashtra and Marathawada.
  - **South India:** Coastal Andhra Pradesh & Yanam, Telangana, Rayalaseema, Coastal Karnataka, North Interior Karnataka, South Interior Karnataka, Kerala & Mahe, Tamil Nadu, Puducherry & Karaikal and Lakshadweep.



## LEGENDS

1. अंडमान और निकोबार द्वीपसमूह

2. अरुणाचल प्रदेश

3. असम और मेघालय

4. नागालैंड, मणिपुर, मिजोरम और त्रिपुरा

5. उप-हिमालयी पश्चिम बंगाल और सिक्किम

6. गंगीय पश्चिम बंगाल

7. ओडिशा

8. झारखंड

9. बिहार

10. पूर्वी उत्तर प्रदेश

11. पश्चिम उत्तर प्रदेश

12. उत्तराखंड

13. हरियाणा, चंडीगढ़ और दिल्ली

14. पंजाब

15. हिमाचल प्रदेश

16. जम्मू और कश्मीर और लद्दाख

17. पश्चिम राजस्थान

18. पूर्वी राजस्थान

19. पश्चिम मध्य प्रदेश

20. पूर्वी मध्य प्रदेश

21. गुजरात

22. सौराष्ट्र

23. कोंकण और गोवा

24. मध्य महाराष्ट्र

25. मराठवाड़ा

26. विदर्भ

27. छत्तीसगढ़

28. तटीय आंध्र प्रदेश और यनम

29. तेलंगाना

30. रायलसीमा

31. तमिलनाडु, पुडुचेरी और कराईकल

32. तटीय कर्नाटक

33. आंतरिक उत्तरी कर्नाटक

34. आंतरिक दक्षिणी कर्नाटक

35. केरल और माहे

36. लक्षद्वीप



1. Andaman & Nicobar Islands

2. Arunachal Pradesh

3. Assam & Meghalaya

4. Nagaland, Manipur, Mizoram & Tripura

5. Sub-Himalayan West Bengal & Sikkim

6. Gangetic West Bengal

7. Odisha

8. Jharkhand

9. Bihar

10. East Uttar Pradesh

11. West Uttar Pradesh

12. Uttarakhand

13. Haryana, Chandigarh & Delhi

14. Punjab

15. Himachal Pradesh

16. Jammu & Kashmir and Ladakh

17. West Rajasthan

18. East Rajasthan

19. West Madhya Pradesh

20. East Madhya Pradesh

21. Gujarat

22. Saurashtra

23. Konkan & Goa

24. Madhya Maharashtra

25. Marathwada

26. Vidarbha

27. Chhattisgarh

28. Coastal Andhra Pradesh & Yanam

29. Telangana

30. Rayalaseema

31. Tamilnadu, Puducherry & Karaikal

32. Coastal Karnataka

33. North Interior Karnataka

34. South Interior Karnataka

35. Kerala & Mahe

36. Lakshadweep

## SPATIAL DISTRIBUTION (% of Stations reporting)

% Stations	Category	% Stations	Category
76-100	Widespread (WS/Most Places)	26-50	Scattered (SCT/A Few Places)
51-75	Fairly Widespread (FWS/Many Places)	1-25	Isolated (ISOL)



Fog



Heavy Snow



Cold Wave



Heavy Rain



Dust Storm



Cold Day



Very Heavy Rain



Heat Wave



Ground Frost



Extremely Heavy Rain



Warm Night



Thunder & Lightning



Hot Day



Hailstorm



Hot & Humid



Dust Raising Winds



Strong Surface Winds

### COLOUR CODED WARNING

No Warning (No Action)

Watch (Be Aware)

Alert (Be Prepared To Take Action)

Warning (Take Action)

### Probabilistic Forecast

Terms	Probability of Occurrence (%)
Unlikely	< 25
Likely	25 - 50
Very Likely	50 - 75
Most Likely	> 75

\* Red colour warning does not mean "Red Alert", Red colour warning means "Take Action".

Forecast and Warning for any day is valid from 0830 hours IST of day till 0830 hours IST of next day.

For more details, kindly visit <https://mausam.imd.gov.in> or contact: 011-2434-4599

(Service to the Nation since 1875)



## DEFINITION/CRITERIA

### Rain/ Snow \*

Heavy: 64.5 to 115.5 mm/cm \*  
Very Heavy: 115.6 to 204.4 mm/cm \*  
Extremely Heavy: > 204.4 mm/cm \*

### Heat Wave

When maximum temperature of a station reaches  $\geq 40^{\circ}\text{C}$  for plains and  $\geq 30^{\circ}\text{C}$  for hilly regions

(a) Based on Departure from normal

Heat Wave: Maximum Temperature Departure from normal  $4.5^{\circ}\text{C}$  to  $6.4^{\circ}\text{C}$ .

Severe Heat Wave: Maximum Temperature Departure from normal  $\geq 6.5^{\circ}\text{C}$

(b). Based on Actual maximum temperature

Heat Wave: When actual maximum temperature  $\geq 45^{\circ}\text{C}$ .

Severe Heat Wave: When actual maximum temperature  $\geq 47^{\circ}\text{C}$ .

(c). Criteria for heat wave for coastal stations

When maximum temperature departure is  $> 4.5^{\circ}\text{C}$  from normal. Heat Wave may be described provided maximum temperature  $\geq 37^{\circ}\text{C}$ .

### Warm Night

When maximum temperature remains  $40^{\circ}\text{C}$

Warm Night: When minimum temperature departure  $4.5^{\circ}\text{C}$  to  $6.4^{\circ}\text{C}$ .

Severe Warm Night: When minimum temperature departure  $> 6.4^{\circ}\text{C}$ .

### Cold Wave

When minimum temperature of a station  $\leq 10^{\circ}\text{C}$  for plains and  $\leq 0^{\circ}\text{C}$  for hilly regions.

(a). Based on departure

Cold Wave: Minimum Temperature Departure from normal  $-4.5^{\circ}\text{C}$  to  $-6.4^{\circ}\text{C}$ .

Severe Cold Wave: Minimum Temperature Departure from normal  $\leq -6.5^{\circ}\text{C}$

(b) Based on actual Minimum Temperature (for Plains only)

Cold Wave: When Minimum Temperature is  $\leq 4.0^{\circ}\text{C}$

Severe Cold Wave: When Minimum Temperature is  $\leq 2.0^{\circ}\text{C}$

(c) For Coastal Stations

When Minimum Temperature departure is  $\leq -4.5^{\circ}\text{C}$  & actual Minimum Temperature is  $\leq 15^{\circ}\text{C}$

### Cold Day

When minimum temperature of a station  $\leq 10^{\circ}\text{C}$  for plains and  $\leq 0^{\circ}\text{C}$  for hilly regions

Based on departure

Cold Day: Maximum Temperature Departure from normal  $-4.5^{\circ}\text{C}$  to  $-6.4^{\circ}\text{C}$ .

Severe Cold Day: Maximum Temperature Departure from normal  $\leq -6.5^{\circ}\text{C}$

### Fog

Phenomenon of small droplets suspended in air and the horizontal visibility  $< 1\text{km}$

Moderate Fog: When the visibility between 500-200 metres

Dense Fog: when the visibility between 50- 200 metres

Very Dense Fog: when the visibility  $< 50$  metres

### Thunderstorm

Sudden electrical discharges manifested by a flash of light (Lightning) and a sharp rumbling sound (thunder)

### Dust/Sand Storm

An ensemble of particles of dust or sand energetically lifted to great heights by a strong and turbulent wind.

### Frost

Ice deposits on ground

Air temperature  $\leq 4^{\circ}\text{C}$  ( over Plains)

### Squall

A strong wind that rises suddenly, lasts for atleast 1 minute.

Moderate: Wind speed 52-61 kmph

Severe: Wind speed 62-67 kmph

Very Severe: Wind speed  $> 67$  kmph

### Sea State

Effect of various waves in the sea over specific area

Rough to very rough: Wind speed 41-62 kmph (22-33 knots) & Wave height 2.5-6 metre

High to very high: Wind speed 63-117 kmph ( 34-63 knots) & Wave height 6-14 metre

Phenomenal: Wind speed  $> 117$  kmph ( $> 63$  knots) & Wave height  $> 14$  metre

### Cyclone

Cyclonic Storm: Wind speed 62-87 kmph (34-47 knots)

Severe Cyclonic Storm: Wind speed 88-117 kmph (48-63 knots)

Very Severe Cyclonic Storm: Wind speed 118-165 kmph (64 - 89 knots)

Extremely Severe Cyclonic Storm: Wind speed 166-220 kmph (90 -119 knots)

Super Cyclone Storm: Wind speed  $> 220$  kmph ( $> 119$  knots)

\* Red colour warning does not mean "Red Alert", Red colour warning means "Take Action".

Forecast and Warning for any day is valid from 0830 hours IST of day till 0830 hours IST of next day.

For more details, kindly visit <https://mausam.imd.gov.in> or contact: 011-2434-4599

(Service to the Nation since 1875)

**Hot and Humid:** When maximum temperatures remain  $3^{\circ}\text{C}$  above normal along with the above normal relative humidity.